

Library Faculty provide Excellence in Teaching Workshop Teaching Information Literacy: A General Education Outcome

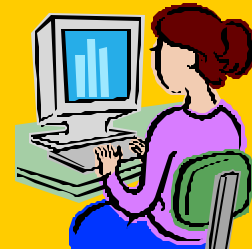
On October 14th, Lakeland Librarians Michelle Rossman, Tom Hyland and Kate Kendall were pleased to present a workshop to faculty on integrating the Information Literacy GEO#5 into their classes. Librarians drew up information literacy "template" assignments that can be adapted to any subject area by faculty wishing to reinforce information literacy with their students. Lakeland Faculty brought assignments to be critiqued by their peers; some were chosen for the IL "treatment." Feedback from attendees has been enthusiastic and we look forward the second session on November 18th.

The Information Literacy assignments can be found grouped by the Performance Indicator that they satisfy, at:
<http://www.lakelandcc.edu/stuservi/library/ILgateway.html>

New Materials in the Library:

See our web page for a complete listing of materials added by semester:

<http://www.lakelandcc.edu/stuservi/library/newnew.html>



Inside this issue:

<i>Faculty Workshop</i>	1
<i>Open Research Sessions</i>	1
<i>Writing Center Satellite</i>	2
<i>Book Discussion Group</i>	2
<i>Lakeland ID cards</i>	2
<i>New E-books</i>	3
<i>Mission Statement</i>	3
<i>Save OhioLINK Funding</i>	3



Open Research Session Schedule

The library is again offering general Open Research Sessions where students can get help with their projects from a Reference Librarian. Paralegal sessions will be scheduled soon. Please make your students aware that research help and instruction is available in the library at the following times:

Mon.	Nov. 21	4:00-5:15 pm
Tues.	Nov. 29	4:00-5:15 pm
Wed.	Nov.30	12:30-1:45pm
Thur.	Dec. 1	12:30-1:45pm
Sat.	Dec. 3	11:30-12:45pm
Wed.	Dec. 7	5:00-6:15 pm
Thur.	Dec.8	5:00-6:15 pm

Call the Reference Desk at (440) 525-7425 for more information.

Writing Center Satellite Now in the Library

The Writing Center will now have a satellite location in the Library Reference area. During the fall semester on Tuesdays from 3:30 to 6:30 pm, consultant James Maxfield will be available for appointments.

Appointments are on a walk-in basis. The students can get assistance with papers or other writing projects for any class at the satellite. Please inform your students of the availability of this service.

Call (440) 525-7425, the Library Reference Desk
or
(440) 525-7569, the Writing Center
For additional information



Library Book Discussion Group

Please join the staff of the Lakeland Library in our lively discussions of many of today's popular titles.

Our next title is ***Extremely Loud and Incredibly Close***, by Jonathan Safran Foer, to be discussed on Wednesday, November 2, at 12 noon, in the library. This group is open to everyone; please join us!

The Lakeland Library Book Discussion Group meets every 6-8 weeks (depending on the length of the book) .

Upcoming titles:

The Boy Who Loved Anne Frank by Ellen Feldman

The Prize Winner of Defiance Ohio by Terry Ryan

Expecting Adam by Martha Beck

For more information see the library webpage about the book group:

<http://www.lakelandcc.edu/stuservi/library/newbkdiscgrp.html>



Book Cover from Amazon.com

For more information on the
Book Discussion group phone:
(440) 525-7424

TEXTBOOK RESERVE The library has established and continues to maintain a **textbook reserve**. This reserve is frequently used and appreciated by the students. If you have an extra copy of the textbook currently being used in your class, please consider placing it on textbook reserve. You may bring the textbook to the library, or contact Judy Schmidt at (440) 525-7463 to arrange for pick-up.

The Library is using the Lakeland Community College ID card.

The library uses the Lakeland ID card as a library card. The student LID# is used as a library number. Students wishing to borrow materials from the library must present a valid campus ID at time of checkout. Those without an ID card will have their materials held for them until they can obtain the ID. ID's are made in the Athletic and Fitness Center (Y) building. Students must present their campus schedule and a valid Ohio ID. Please pass this information on to students in your classrooms. Call the Library Circulation Desk at (440)525-7424 for more information.

Ten New E-books Added to OhioLINK's Electronic Reference Books Collection

The Electronic Reference Books Collection (<http://rave.ohiolink.edu/ebooks/reference/home>) contains special-topic reference books--including encyclopedias, handbooks, biographical collections, guides--from ABC-CLIO, an educational reference publisher.

The most recent additions to the Electronic Reference Books Collection are:

- Brazilian Music: Northeastern Traditions and the Heartbeat of a Modern Nation
- Defense and Security: A Compendium of National Armed Forces and Security Policies
- Germany and the Americas: Culture, Politics, and History
- Historic Cities of the Americas: An Illustrated Encyclopedia
- The Internet: A Historical Encyclopedia
- Invasion of Privacy: A Reference Handbook
- New Slavery: A Reference Handbook Second Edition
- Personal Perspectives: World War II
- U.S. Homeland Security: A Reference Handbook
- World War I: Encyclopedia

Find these and other electronic books at the following URL:
<http://rave.ohiolink.edu/ebooks/reference/home>



Library Mission Statement:

The Lakeland Community College Library is a full partner in the teaching and learning process of the college community. As the major information resource on campus, the library supports quality opportunities for life-long learning by acquiring materials in support of the curriculum, providing access to those materials, and teaching information literacy skills.

General Education Outcome # 5:

Uses Information Effectively and Responsibly

The information literate learner accesses and uses information effectively and responsibly. The learner:

- Develops an effective search strategy
- Evaluates, selects, and critically analyzes information
- Uses and manipulates information responsibly, ethically, and legally
- Uses technology to access and manage information



HELP to support the retention of your OhioLINK resources.

Please visit:

<http://www.ohiolink.edu/supportohiolink>

to take action to eliminate further cuts. Information to help users communicate with state legislators and additional action steps are posted.

Impacting Lives Through Learning @ Your Library

library.lakelandcc.edu