

## New EJC Interface Makes Searching Easier

The OhioLINK Electronic Journal Center (EJC) has a new look: <http://journals.ohiolink.edu/ejc/>  
For assistance, call Reference at 440.525-7425.



## Library Hours - Spring Semester



**Monday - Thursday:** 8am - 9pm  
**Friday:** 8am - 5pm  
**Saturday:** 9am - 1pm  
**Sunday:** Closed  
Changes to hours will be posted.  
Phone 440.525-7069 for more information.

### Inside this issue:

<i>Electronic Journal Center</i>	1
<i>Library Hours</i>	1
<i>Images MD Database</i>	1
<i>Local Resources</i>	2
<i>Book Discussion Group</i>	2
<i>Lakeland ID Cards</i>	2
<i>OhioLINK Electronic Reference Books</i>	3

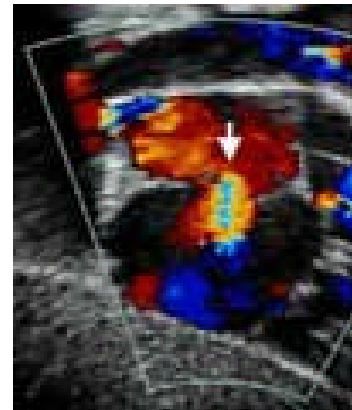
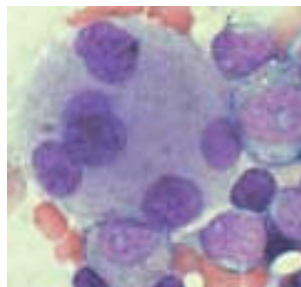
## New Medical Images Database

Images.MD, is an online encyclopedia of medical images. It compiles more than 55,000 images from more than 90 collections ranging from allergy to urology, each accompanied by detailed and informative text contributed by more than 2,000 medical experts.

From on-campus, connect to:

<http://www.images.md/>

Images MD can be found on the Database lists alphabetically, by type, and by subject: **Medicine and Health**



From the library homepage: <http://library.lakelandcc.edu>  
click Search & Find, then All E-Resources.

## Library Provides Local Resources, by Linda Glasser & Kathy Fink

During the Fall Semester, approximately 560 new books and media items were added to the library collection. Over 59,000 reference and circulating books are now available for students and faculty to use in the Lakeland Library, along with more than 390 current periodical titles.

Faculty and students also have access to the library's media collection of over 3,650 videos and 470 DVDs. Students may view videos and DVDs in the library.

You can search the Lakeland Library collection for books and media at <http://library.lakelandcc.edu> or search the OhioLINK catalog at <http://www.ohiolink.edu> containing more than 39.2 million library items statewide.

### Library Statistics for Fall 2006:

Materials checked out:	10,203 items
Library Accounts Activated:	1,816 (new and updated accounts)
Information Literacy Instruction:	145 classes reaching 2,441 students
New Student Orientations:	13 sessions reaching 364 students
TLC visits for book selection:	8 visits by toddlers
(Teaching Learning Center)	8 visits by preschoolers
Campus Tours to Library:	3 tours with 185 students visiting the library

## Book Discussion Group @ Your Library

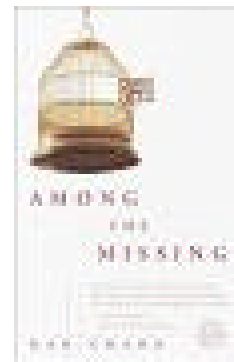
Please join the staff of the Lakeland Library in our lively discussions of many of today's popular titles.

Our next title is *Among the Missing*, by Dan Chaon, to be discussed on Tuesday, February 27, 2007, at 12 noon, in the library. This group is open to everyone; please join us!

For more information see the library webpage about the book group:

<http://library.lakelandcc.edu/bookdiscussiongroup.html>

*The Birth of Venus*, by Sarah Dunant, will be the book selection for April.



Book Cover from:

<http://www.amazon.com>

For more information on the Book Discussion Group phone:  
(440) 525-7424

## College ID Cards @ Your Library, by Linda Glasser

An additional service is now available in the Library. Library staff are now able to create College Identification Cards for students and employees.

For students, a current class schedule and driver's license or picture ID is required; a picture is taken and a College ID created in just a few minutes. The College ID is then used as a library card at Lakeland Library.

Inquire at the Library Circulation Desk about this new service or call 440.525.7424 for more information.

## OhioLINK Adds Eleven New Electronic Reference Books

Eleven titles have been added to the Electronic Reference Books Collection, bringing the total number of e-books in the collection to 501. The newest additions are:

- Aircraft Carriers: An Illustrated History of Their Impact  
<http://rave.ohiolink.edu/ebooks/reference/aircthc.xml.inp>
- The Crusades: An Encyclopedia  
<http://rave.ohiolink.edu/ebooks/reference/crusade.xml.inp>
- The Encyclopedia of the American Revolutionary War: A Political, Social, and Military History  
<http://rave.ohiolink.edu/ebooks/reference/ryfrebe.xml.inp>
- The Encyclopedia of the French Revolutionary and Napoleonic Wars: A Political, Social, and Military History  
<http://rave.ohiolink.edu/ebooks/reference/frnwee.xml.inp>
- Genetic Engineering: A Reference Handbook Second Edition  
<http://rave.ohiolink.edu/ebooks/reference/geneng2e.xml.inp>
- Industrial Revolution in America: Automobiles  
<http://rave.ohiolink.edu/ebooks/reference/irauto1e.xml.inp>
- The Judicial Branch of State Government: People, Process, and Politics  
<http://rave.ohiolink.edu/ebooks/reference/stajud1e.xml.inp>
- Pop Culture Germany!: Media, Arts, and Lifestyle  
<http://rave.ohiolink.edu/ebooks/reference/popger1e.xml.inp>
- Turning Points in History: Colonial America from Settlement to the Revolution  
<http://rave.ohiolink.edu/ebooks/reference/tphcam1e.xml.inp>
- Turning Points—Actual and Alternate Histories: Native America from Prehistory to First Contact  
<http://rave.ohiolink.edu/ebooks/reference/tphnam1e.xml.inp>
- World Fascism: A Historical Encyclopedia  
<http://rave.ohiolink.edu/ebooks/reference/fascsme.xml.inp>



### Library Mission Statement:

The Lakeland Community College Library is a full partner in the teaching and learning process of the college community. As the major information resource on campus, the library supports quality opportunities for lifelong learning by acquiring materials in support of the curriculum, providing access to those materials, and teaching information literacy skills.

#### General Education Outcome # 5:

##### Uses Information Effectively and Responsibly

The information literate learner accesses and uses information effectively and responsibly. The learner:

- Develops an effective search strategy
- Evaluates, selects, and critically analyzes information
- Uses and manipulates information responsibly, ethically, and legally
- Uses technology to access and manage information

See page 39 of the 2006-2007 Lakeland Catalog for the complete General Education Outcomes Model.

HELP to support the retention of your OhioLINK resources.

Please visit:

<http://www.ohiolink.edu/supporttohiolink>

to take action to eliminate further cuts. Information to help users communicate with state legislators and additional action steps are posted.

*Impacting Lives Through  
Learning @ Your Library*

<http://library.lakelandcc.edu>